



gent:

Bringing back nature to the city

green and blue building blocks for the city

15 juni 2023

Ghent

15.777 ha

267.712 inhabitants

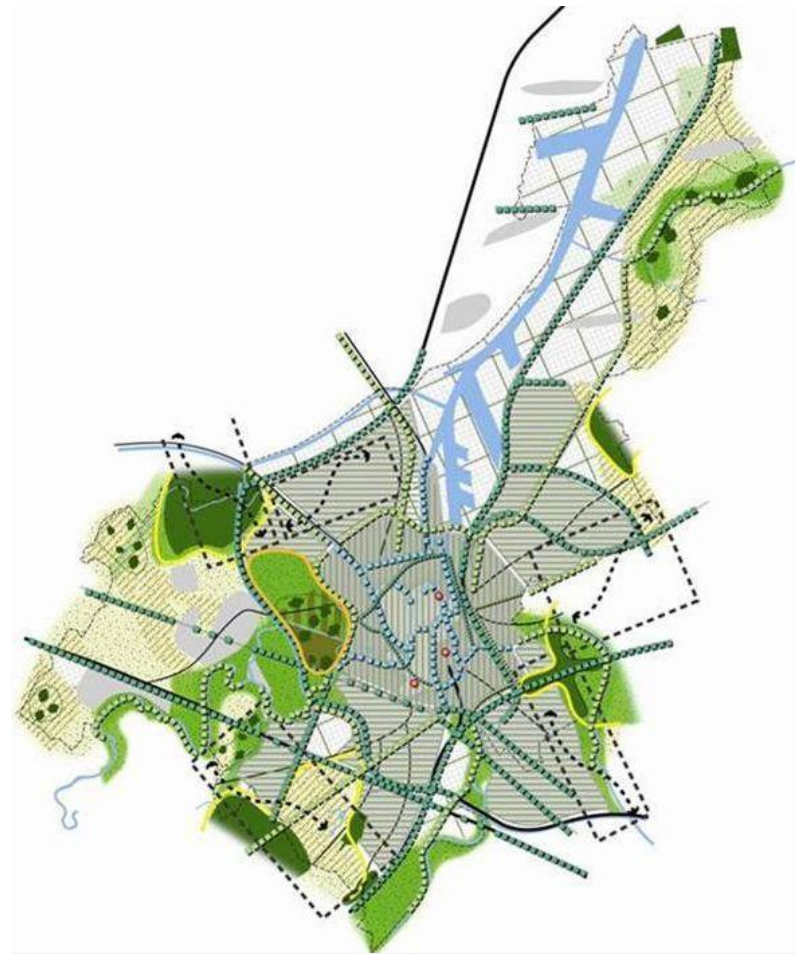
+/- 1000 ha public green area
39 m²/inhabitant

Parks and Public Gardens Service Ghent

+/- 350 employees

- Tasks:
 - Green policy
 - Design
 - Realisation
 - Maintenance

parks, natural areas, playgrounds,
cemeteries, trees, ...



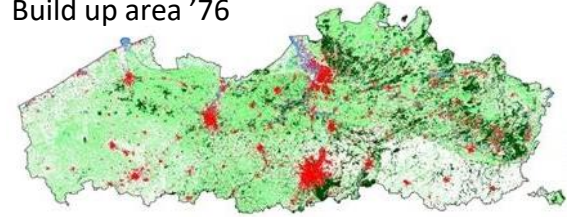
How do we grow wisely

- Smart densification and aerating
- Cleverly interweaving functions
- **Green and water facilities**
- Stimulating sustainable mobility
- The human focus

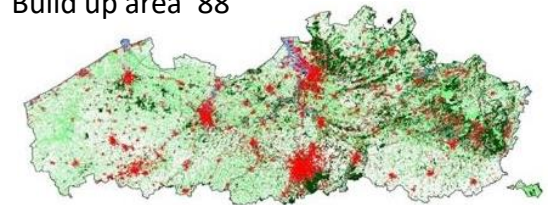
Leads to “Space for Ghent”
(2050)

**GSP and Water in the city are
two of the building blocks**

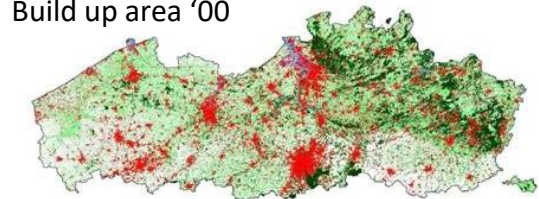
Build up area '76



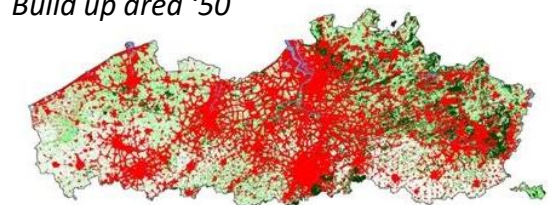
Build up area '88



Build up area '00



Build up area '50



Green Structure Plan (GSP)

Quod?

- > Long term vision ('30) for the green environment
- > Intrinsic basic principles
 - Sustainable park management
 - Ghent climate-solid and climate-neutral
 - Child-friendly city

GSP is used as a reference document when new plans are made (space for Ghent, climate plans, ...)

Five thematic objectives:

Recreation

Accessible and high-grade green areas

Nature

Preserve, enhance and connect

Forest

Preserve en expand

Climate

Robust, adaptation & mitigation

Landscape

Enhance recognizability and readability

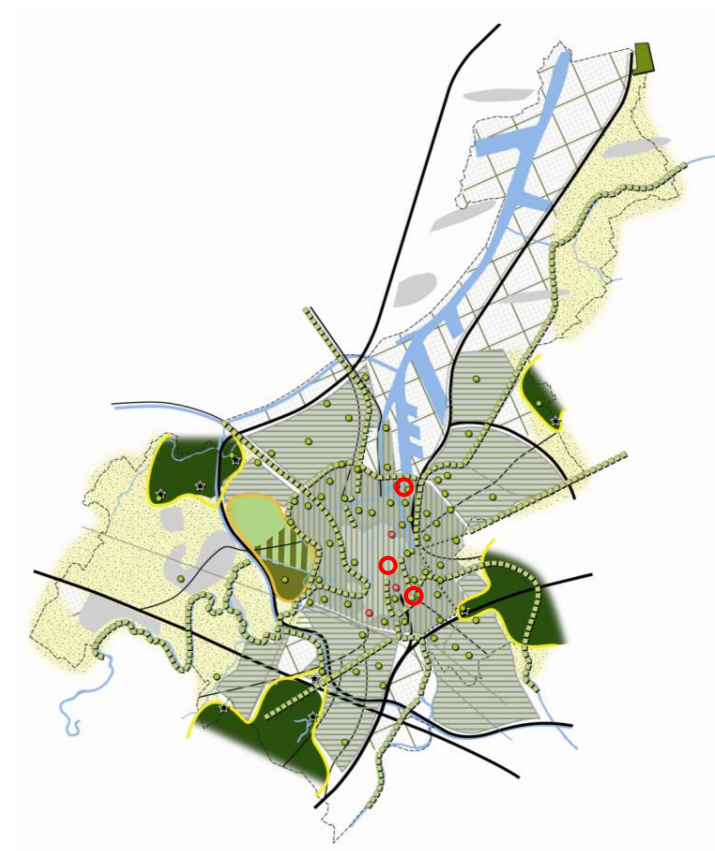
Recreational green structure

Sufficient quantity of greenery

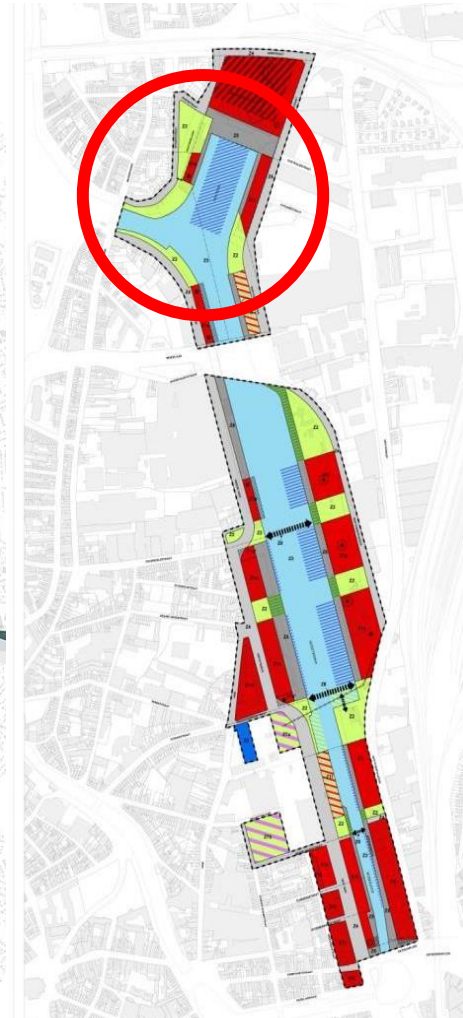
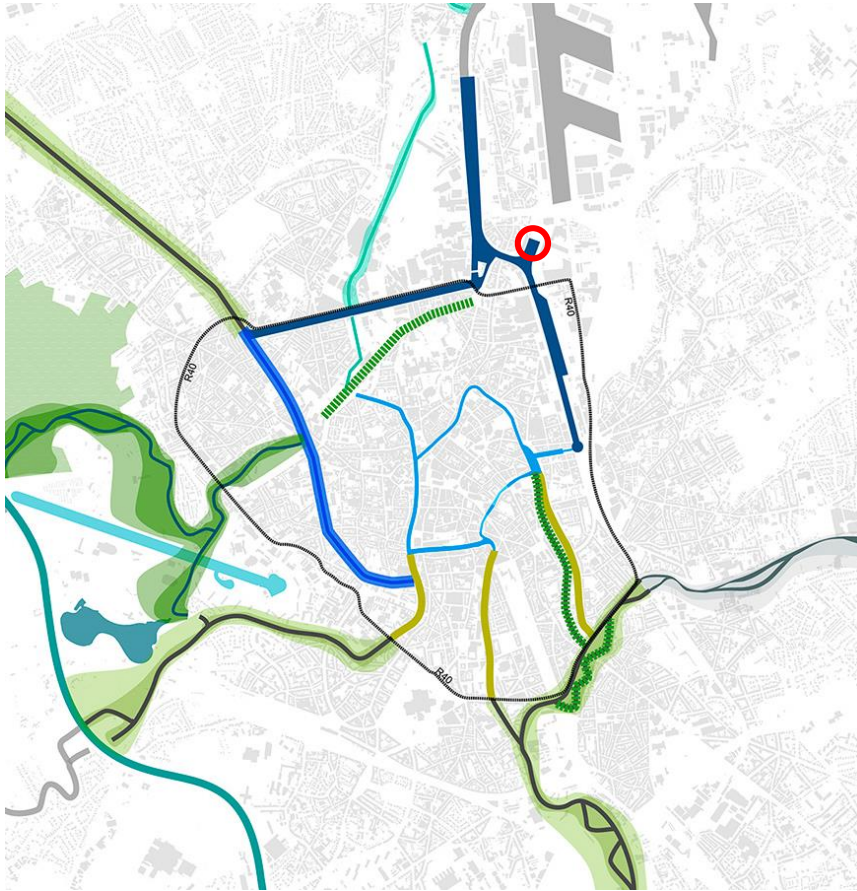
- > Green poles
 - Min. 100 ha at max. 5 km
- > Local parks
 - Min. 1 ha or 10 m²/inhabitant at max 400 m
 - Provides recreational opportunities for different target groups
- > Pocket parks
 - No min. surface and function at street level 150 m

Different layers are easily accessible and connected

through slow road network and the Green climate axes



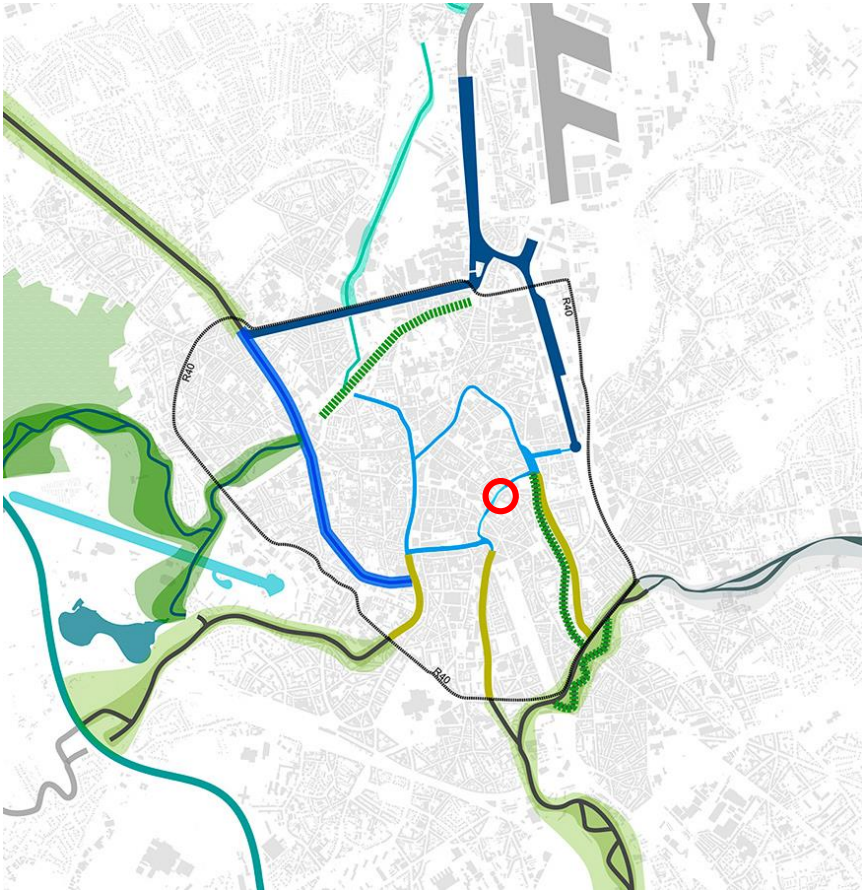
Captain Zeppos park – oude dokken



Water in the city of ghent



Reopening the waterway at the Reep



Water park Franse Vaart

